



US00D334246S

# United States Patent [19]

[11] **Patent Number: Des. 334,246**

**Baker**

[45] **Date of Patent: \*\* Mar. 23, 1993**

[54] **ASHTRAY**

2,323,293	7/1943	Boho .	
2,974,821	3/1961	Lamont .....	220/23.4
3,404,693	10/1968	Chapman .....	131/235
3,519,001	7/1970	Bolinger .....	131/235

[76] **Inventor: Gary H. Baker, 4301 Blake SW., Space 63, Albuquerque, N. Mex. 87120**

[\*\*] **Term: 14 Years**

[21] **Appl. No.: 717,727**

[22] **Filed: Jun. 17, 1991**

[52] **U.S. Cl. .... D27/129; D27/134**

[58] **Field of Search .... 131/231, 235.1; D27/134, 111, 129, 138**

### OTHER PUBLICATIONS

Phil Mar Corporation Catalog Aug. 11, 1960, p. 39, ashtray, item No. 2322 located at top right corner.

*Primary Examiner*—Wallace R. Burke

*Assistant Examiner*—H. Baynham

*Attorney, Agent, or Firm*—Deborah A. Peacock

### CLAIM

[57] The ornamental design for an ashtray, as shown and described.

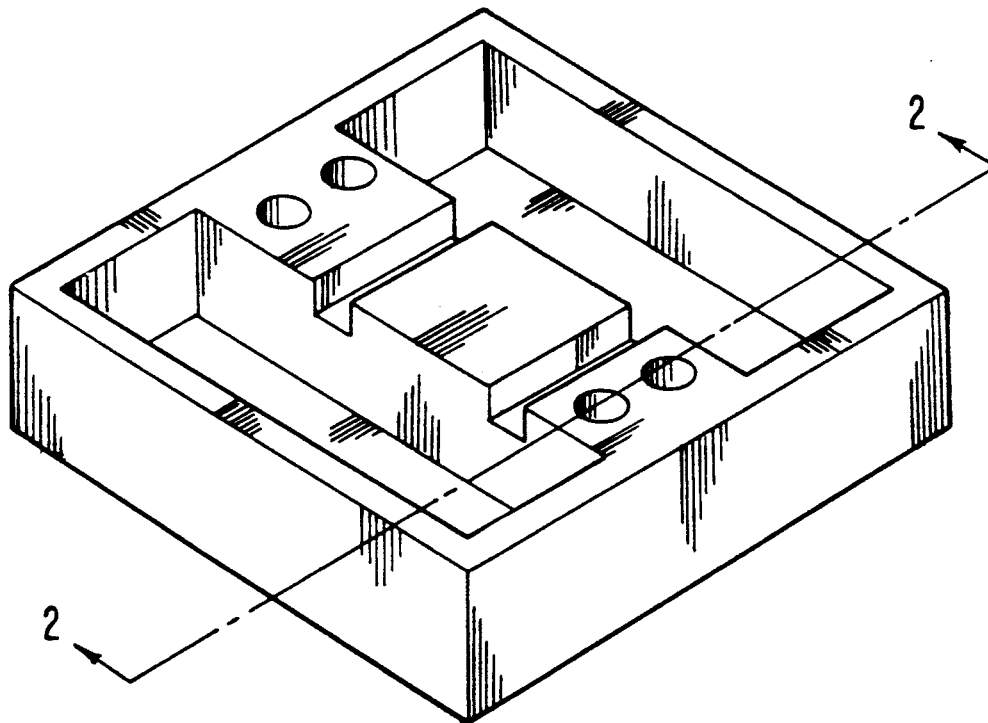
[56] **References Cited**

#### U.S. PATENT DOCUMENTS

D. 61,267	7/1922	Chapman .....	D27/134
D. 124,603	1/1941	Frank .....	D27/129
D. 135,597	4/1943	Penn .....	D27/129
D. 135,598	4/1943	Penn .....	D27/129
D. 136,574	10/1943	Penn .....	D27/129
D. 149,143	3/1948	Potter .....	D27/134
D. 165,538	12/1951	Moore .....	D27/134
D. 174,293	3/1955	Rodefild .....	D27/134
1,830,543	11/1931	Heise .	

### DESCRIPTION

FIG. 1 is a perspective view of an ashtray showing my new design;  
 FIG. 2 is a sectional view thereof along line 2—2 of FIG. 1;  
 FIG. 3 is a top plan view thereof;  
 FIG. 4 is a bottom plan view thereof; and,  
 FIG. 5 is a side elevational view thereof with the opposite side being a mirror image thereof.



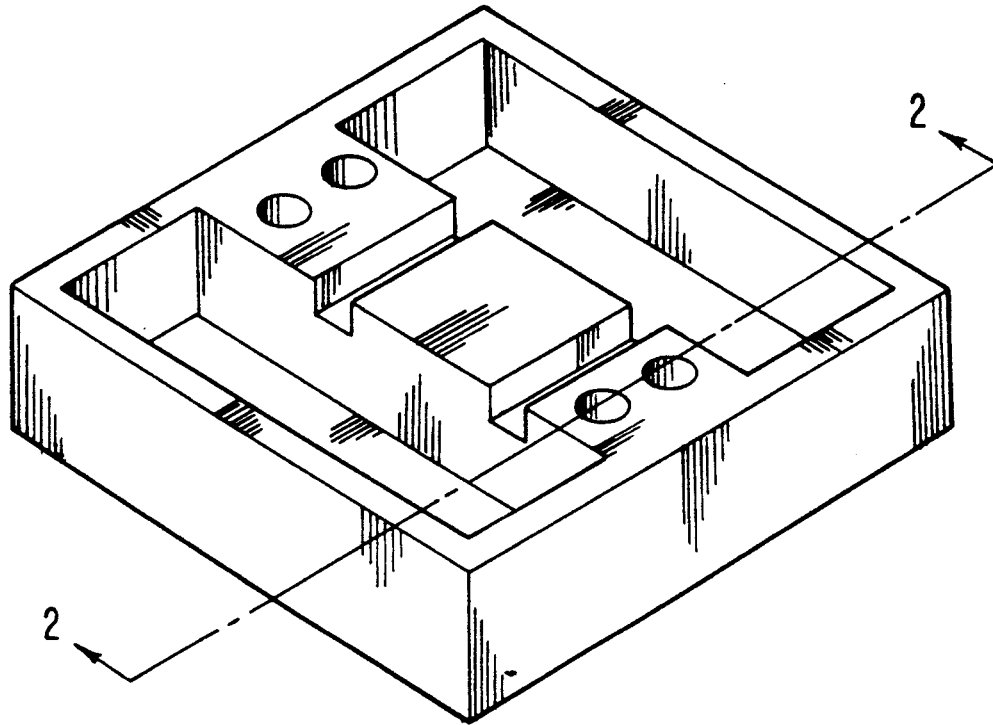


FIG-1

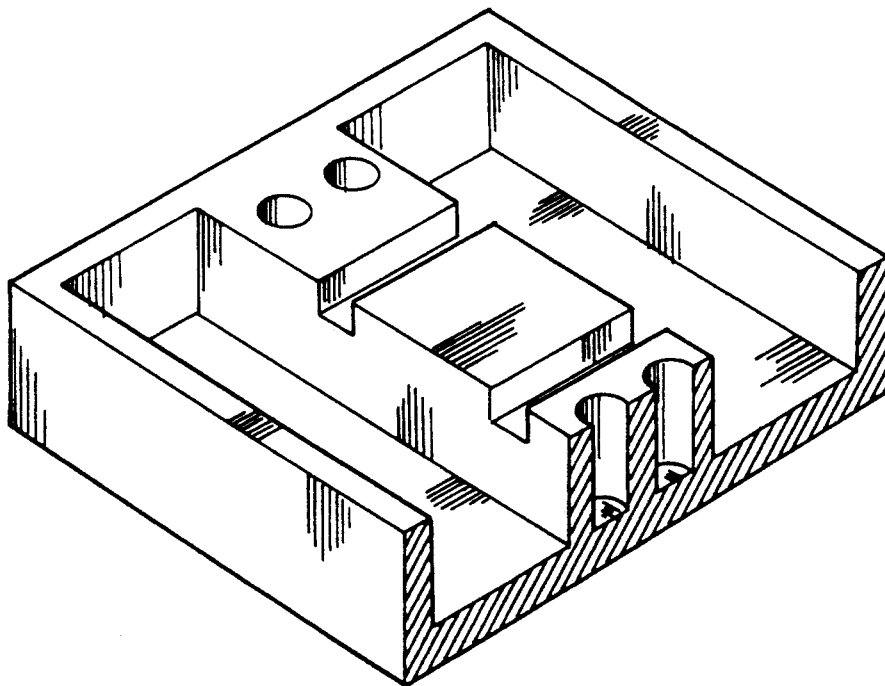


FIG-2

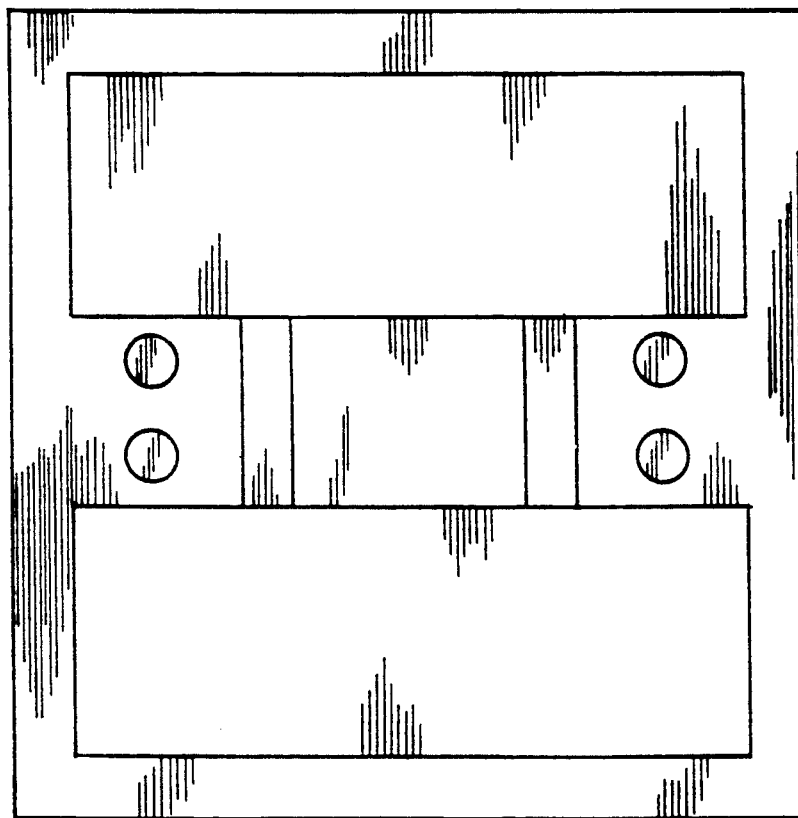


FIG-3

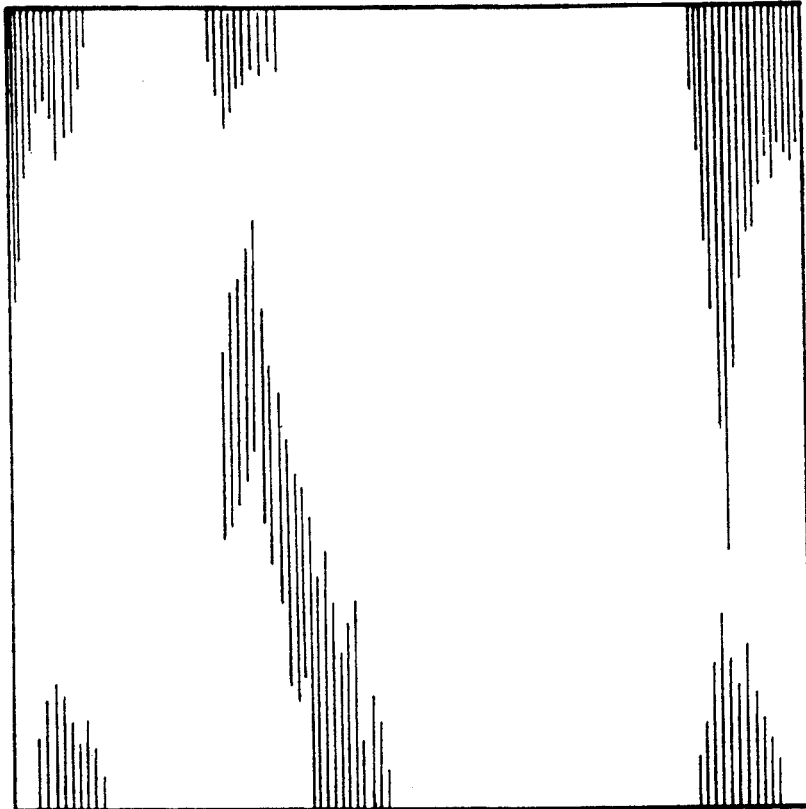


FIG-4

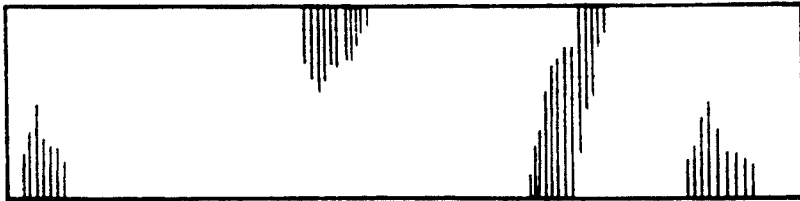


FIG-5